

# SD22

BULLDOZER  
SERIES

ENGINE MODEL	CUMMINS NT855-C280S10
GROSS POWER	175KW(235HP)@1800rpm
OPERATING WEIGHT	23450KG

**SHANTUI**  
ชานทูย ไทยแลนด์

LET'S MAKE  
CONSTRUCTION EASIER



**ASIA VEHICLE CORPORATION CO., LTD.**

ADD : 6/57 Moo 2, Ban Suan, Muang, Chonburi 20000

TEL : +66 38190 999

Mobile : +66 81955 0450

EMAIL : [shantui@faw-asia.com](mailto:shantui@faw-asia.com) WEB : [www.asia-vehicle.com](http://www.asia-vehicle.com)



Asia Vehicle

# SD22 TECHNICAL PARAMETERS BULLDOZER SERIES

# SHANTUI

ENGINE	SD22/W	SD22C	SD22F	SD22D/E	SD22S	SD22R
Engine	Cummins NT855-C280S10					
Emission	China-I					
Rated revolution	1800rpm					
Gross power	175kW(235hp)@1800rpm					
Net power	162kW(220hp)@1800rpm					
Number of cylinder-bore×stroke	6-140X152mm					
Displacement	14.01L					
Max. torque	1080N.m@1300rpm					
Cooling system	Mechanic fan					

DRIVE SYSTEM	SD22/W	SD22C	SD22F	SD22D/E	SD22S	SD22R
Drive system	Manufactured by SHANTUI, with high working efficiency, low breakdown rate; torqflow transmission, 3 gears forward and 3 gears backward.					
Traveling speed	Forward	F1:3.6km/h R2:6.5km/h F3:11.2km/h				
	Backward	R1:4.3km/h R2:7.7km/h R3:13.2km/h				
Max. theoretical traction force	450kN					
Torque converter	3-element, single stage, 1-phase					
Transmission	Planetary gear and torqflow transmission hydraulically actuated, forced lubrication					
Central drive	Spiral bevel gear, single-stage speed reduction, splash lubrication					
Steering clutch	Wet multiple disc, disc spring loaded, hydraulically actuated, hand operated, interconnected with steering brake.					
Brake clutch	Wet, contracting band, foot operated with hydraulic booster					
Final drive	Spur gear, double reduction, splash lubrication					

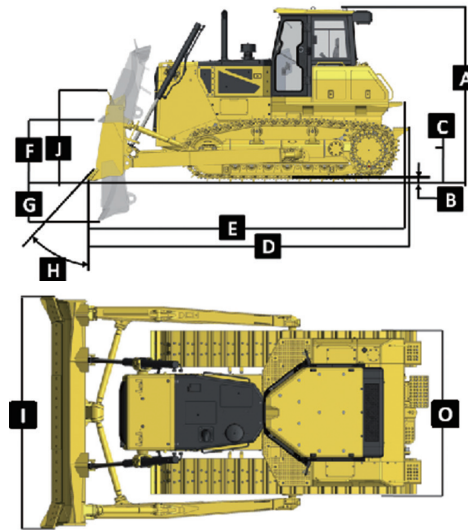
CHASSIS SYSTEM	SD22/W	SD22C	SD22F	SD22D/E	SD22S	SD22R
Type	Swing type of sprayed beam, suspended structure of equalizer bar					
Track shoe type	Single grouser				Wetland type	
Track gauge	2000mm				2250mm	
Width of track shoe	560/610/660mm	660mm	610/660mm	560/610/660mm	910mm	
Track grounding length	2430mm			3050mm	3480mm	
Track grounding area	28727cm <sup>2</sup>	40935cm <sup>2</sup>	38317cm <sup>2</sup>	71476cm <sup>2</sup>		
Number of track shoe	38pcs/side		41pcs/side	45pcs/side		
Grounding pressure (standard configuration)	66kPa	57.5kPa	64kPa	66kPa	36kPa	35.2kPa
Number of carrier roller	2 pcs/side					
Number of track roller	6pcs/side			7pcs/side	8pcs/side	
Pitch	216mm					

VOLUME	SD22/W	SD22C	SD22F	SD22D/E	SD22S	SD22R
Fuel capacity	450L					
Coolant liquid capacity	79L					
Engine oil capacity	45L					
Transmission	122L					
Drive axle	110L					
Final drive	82L/side			102L/side		

OPERATING WEIGHT	SD22/W	SD22C	SD22F	SD22D/E	SD22S	SD22R
Operating weight (standard)	23450kg	24000kg	24700kg	24600kg	25700kg	26000kg

BLADE	SD22C	SD22/W	SD22F	SD22D/E	SD22S	SD22R
Blade type	Coal-U	Straight-tilt/Angle/Semi-U/U			Straight-tilt	Waste handling
Blade capacity	8m <sup>3</sup>	4.6/3.4/5.8/6.7m <sup>3</sup>			5.2m <sup>3</sup>	11.8m <sup>3</sup>

DIMENSION	SD22/W	SD22C	SD22F	SD22D/E	SD22S	SD22R
A Machine height (without ROPS)	3402mm					
B Track grouser height	72mm				123mm (Wetland type)	
C Ground clearance	405mm				513mm	
D Machine length (without draw bar)	6027mm	5462mm		5712mm	6257mm	
E Machine length (with draw bar)	6060mm	5495mm		6290mm		
F Max. lifting height of blade	1210mm				1330mm	
G Max. digging depth of blade	540mm				550mm	
H Digging angle of blade	55°±3°(deg.)					
I Blade width	4200mm				4365mm	
J Blade height	1350mm	1315/1055/1343/1374mm		1248mm	1885mm	
O	Width from end of left track shoe to end of right track shoe (standard)				3000mm	
					3800mm	



PARAMETER OF RIPPER		
Type	Three-shank ripper	Single shank ripper
Weight	2600kg	2450kg
Q Max. ripping depth	666mm	695mm
R Max. lifting height	555mm	515mm
S Ripper length (at deepest ripping)	1781mm	1974mm
T Ripper width	2158mm	1426mm
U Departure angle (at highest lifting)	25.5°	25.5°
V Ripping width	2000mm	2000mm/106mm
W Distance between ripper teeth	930mm	-

